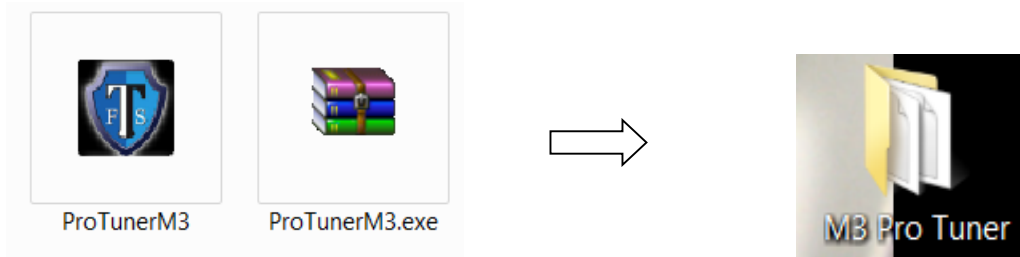




## Remote Tuning Installation Instructions ProTuner and ProLogger

- Purchase your remote tune on our website and upload the **CUSTOM BUILD SHEET** included in the project options section. This build sheet must accompany your order. We cannot create your custom tune without it.
- Once your payment has been processed, you will be shipped a certified TTFS D-Can cable.
  - *\*\*Note: Many other cables can be used with **ProTuner** and **ProLogger**. The software will recognize a supported cable when plugged in. However, we do not recommend you use other cables with our **ProTuner** and **ProLogger** software, only a TTFS certified D-Can cable should be used for optimum results.*
- Download the **ProTuner** and **ProLogger** software (note: the **ProTuner** and **ProLogger** software cannot be opened and operating at the same time, Result will cause your vehicles DME to crash) on to your desktop. You can download the files from our [Software Downloads](#) page or from the product description section of the tune you purchased on [www.tuningtechfs.com](http://www.tuningtechfs.com). *You will need to make sure your laptop has access to the internet)*
- Once the **ProTuner** and **ProLogger** software are downloaded, you will need to create a new folder on your desktop for each file.
- Once both folders are created you will need to place the downloaded **ProTuner** and **ProLogger** software into their corresponding folder. These folders will contain each of the software-related files. (*\*\*Note: ProTuner is used for the reading and writing processes of your DME. ProLogger is used for datalogging the required information needed to adjust your vehicles custom tune.*)







- Once the files have been sent via email, you can turn the vehicle's ignition off, disconnect the TTFS cable, and close the software on your computer.
- A custom tune with your desired specifications will be created for your vehicle ("Tuned.enc") and emailed back to you along with a **ProTuner** key file. ("Your name .key"). **Please allow for 2-3 business days for vehicle's tuning files to be sent to you.**
- Once you receive these files, they will need to be downloaded from your email and placed into the **ProTuner** folder where the **ProTuner** software resides.

### Flashing DME with Tuned File

- Once the .enc file and the .key file have been downloaded and placed in the **ProTuner** folder you will need to open the **ProTuner** software back up, and connect your TTFS cable to your vehicle and to your computer. Please turn your vehicle's ignition ON (**leave the engine OFF**).
- Select "reflash DME" on **ProTuner** software. Once selected, you will need to open the modified tuning file (.enc file) that was sent to you.

*\*Note- once the file is opened the reflashing process will begin.*



**DO NOT DISTURB THE SOFTWARE, COMPUTER OR VEHICLE WHILE FLASHING IS IN PROCESS.**

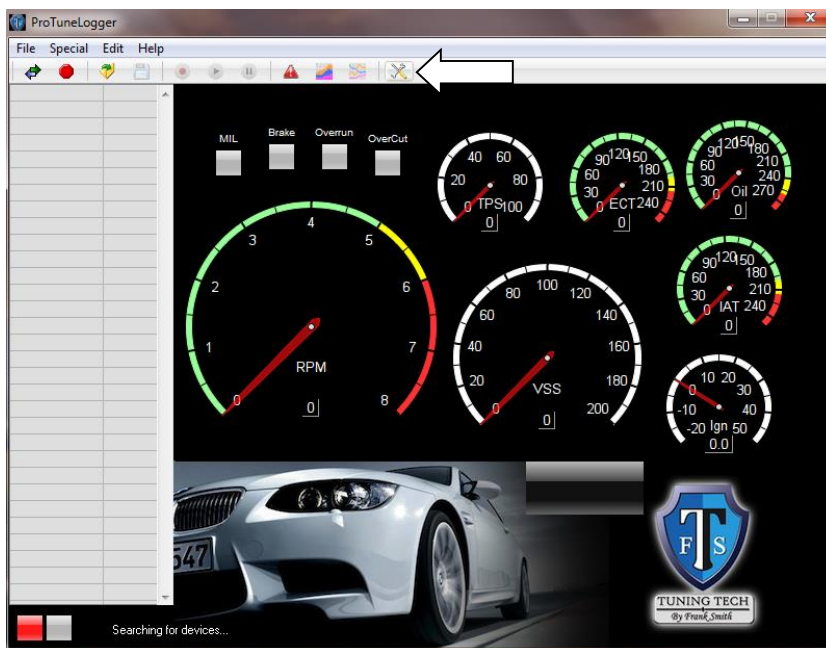
- Once the flashing process has completed please turn your vehicle's ignition OFF for at least 30 seconds before starting your vehicle.
- Start the vehicle, allow the vehicle to warm to operating temperature, and then begin data logging.

## ProLogger: Setting Up Cable, Collecting License and Datalogging

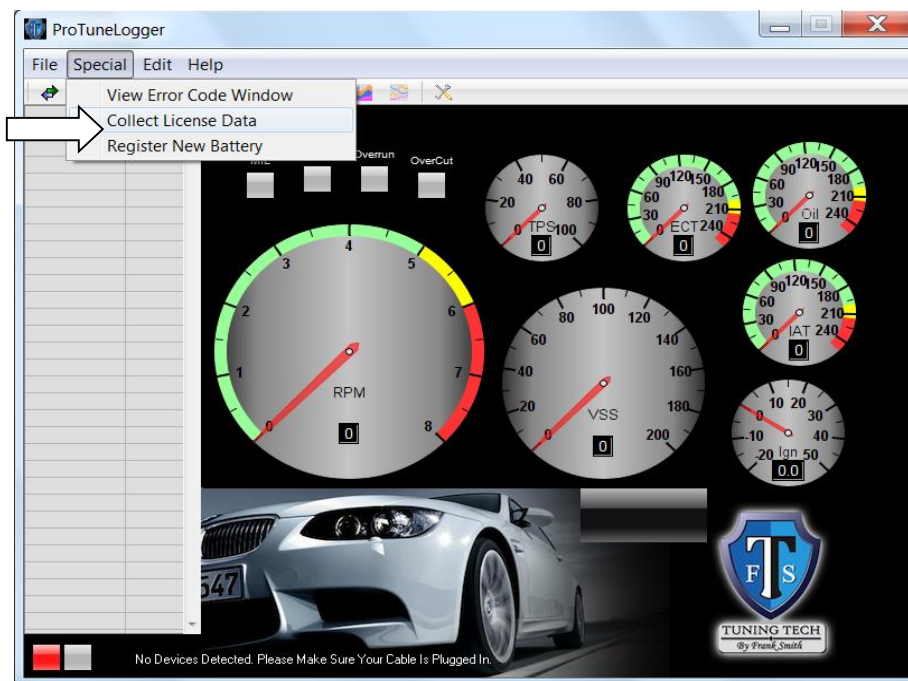
- Open **ProLogger** software, connect TTFS cable to your computer and to your vehicle's OBD2 port. Turn ignition on with engine OFF.



- Choose/Open PREFERENCES from **ProLogger's** menu bar (this will be the screwdriver & wrench icon).
- Under CONNECTIVITY tab, please select your device (cable). If your device is supported, it will appear in the device drop-down menu. Select your device (TTFS D-CAN cable) and click SAVE, to save your preferences.



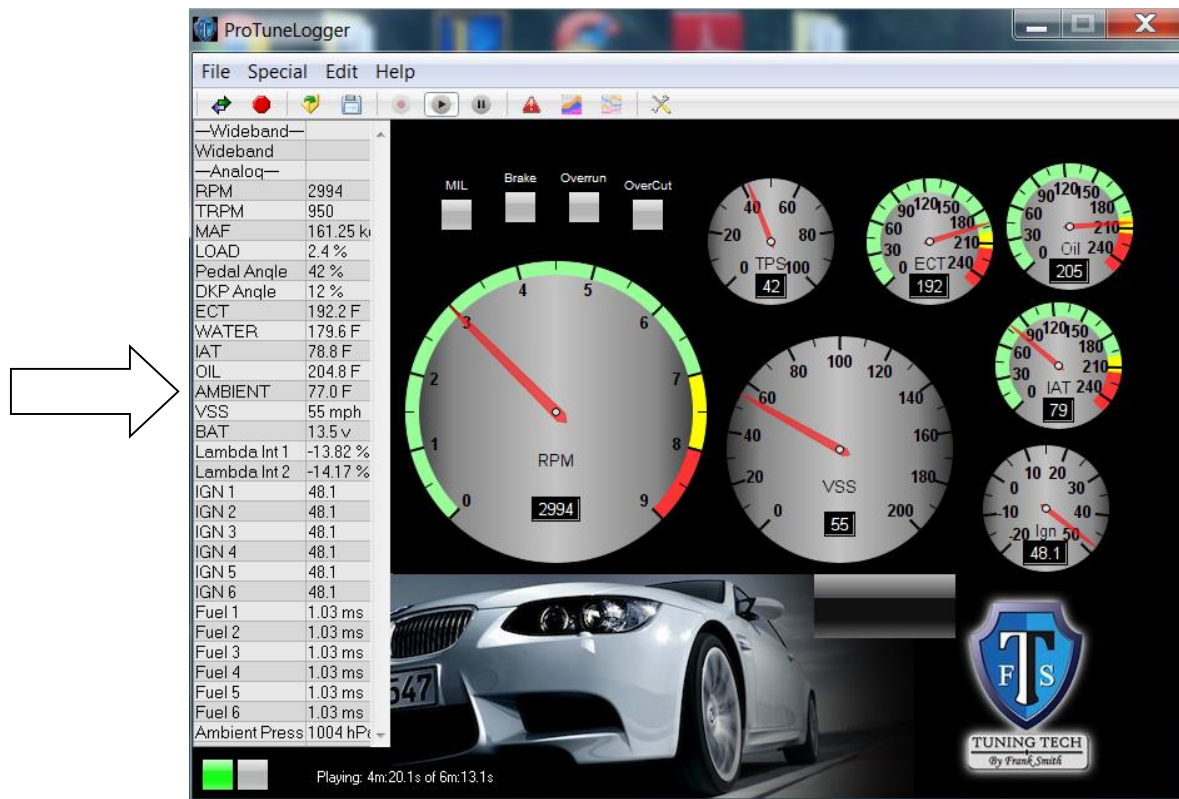
- Your free version of **ProLogger** should now be operational. You can read and clear your DTC, clear adaptations and re-set your battery.
- In order to expand to the data-logging capabilities, you must purchase a license key.
- To purchase a license, submit your payment through our website (unless included with the purchase of your tune).
- Once your payment has been processed, you will be asked to collect a license file from **ProLogger**. You can obtain this license file by going in to the SPECIAL Menu in **ProLogger** and click on the tab that reads, COLLECT LICENSE DATA.



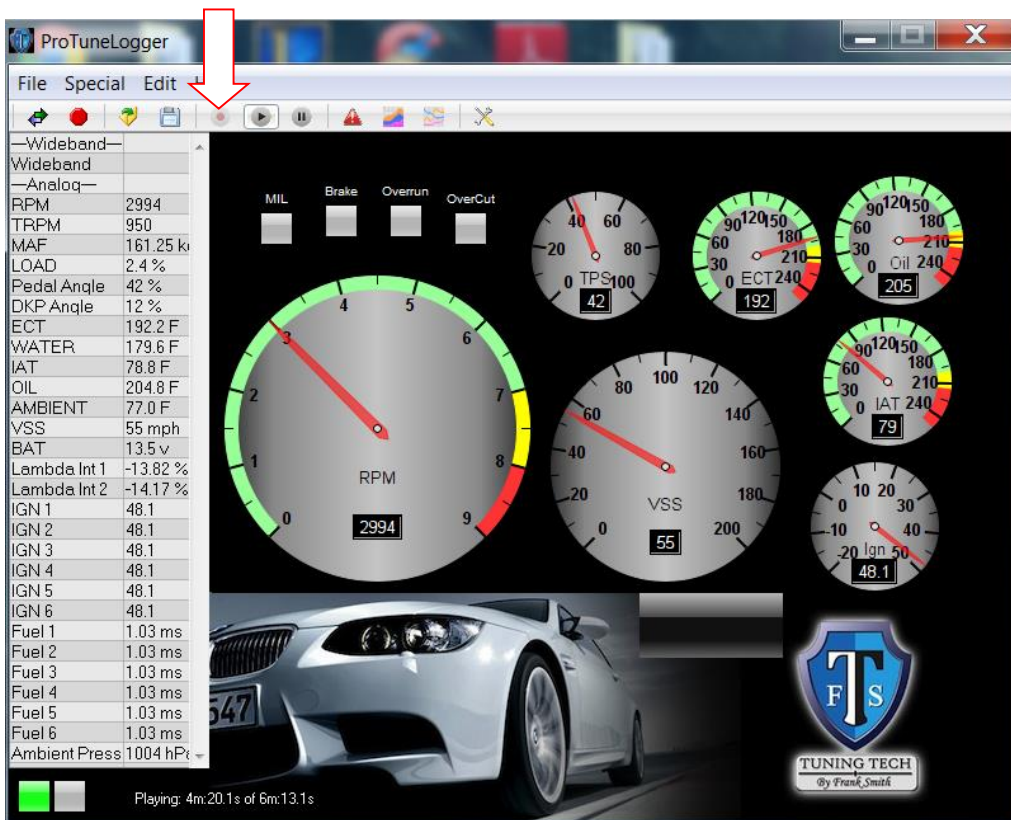
- Save the file with you first and last name.
- Please [email](#) the **ProLogger** license file, which will be located in you **ProLogger** folder where the **ProLogger** software resides.
- You will be issued a license key file via email, which will unlock your data-logging capabilities.
- Once you copy the license key file into the license directory of your **ProLogger** folder, the software will be 100% functional.
- Now you can connect to your vehicle and begin the data logging process.
- To view/record data, you must connect to your vehicle by clicking the CONNECT tab.



- Once connected to the vehicle, the data will appear on the left side of the screen, as well as the gauges on the right side, should be functional.



- You can now click the **RECORD** button so that all data is recorded. Please refer to your tuner with regards to the specific data to be recorded.



- Save the collected data and forward to Frank at [Info@tuningtechfs.com](mailto:Info@tuningtechfs.com) for review. The file may be forwarded in a data-log format or CSV.

TTFS thanks you for your purchase!